

1. Name of the product

Time Timer MAX

2. Product code

05100471

3. Short description

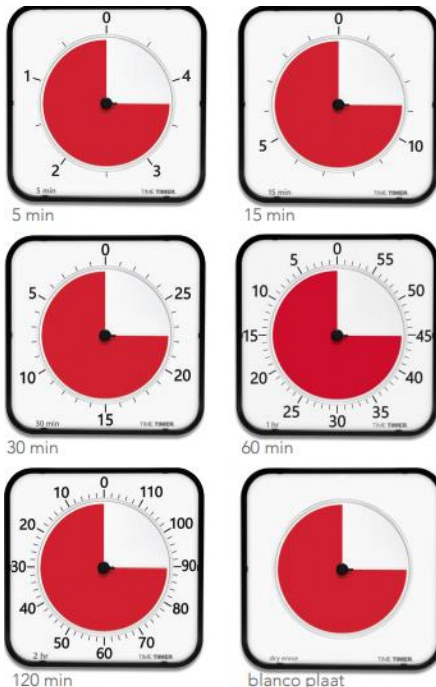
Use the Time Timer to learn the concept of elapsed time, to use time efficiently, to keep track of time during activities, or to encourage independence. The timer is a visual timer that can be used without even knowing time. At home and in daily life the Time Timer has many applications that help everyone become more productive, more organized and more relaxed during the day.

4. Contents

THE TIME TIMER MAX COMES WITH:

- 1 timer with 8 time limits
- 3 double-sided timer plates
- 5/15 minutes, 30/60 minutes, 120 minutes and a blank plate
- 3 set of markers
- 1 suspension system

At the corresponding plates:

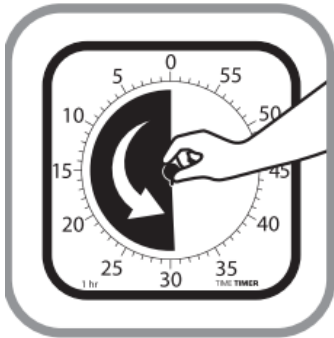


Additional set of plates - sold separately:



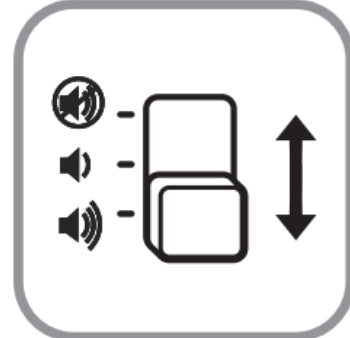
5. How to use

The Time Timer MAX is unique in size and applications. It is a 44 x 44 cm timer that is easily visible in large spaces. It is also eight (8) timers in one Time Timer - with customisable time limits and changeable timer plates, the MAX can run from 5 minutes to 24 hours. The Time Timer MAX is perfect for keeping activities running on time, even if it takes all day!



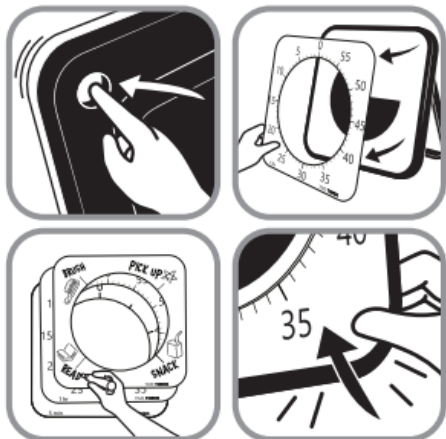
TO SET THE TIMER:

Turn the centre knob counterclockwise to set the time. The red disc disappears clockwise and when the disc is gone, the time is up.



OPTIONAL ALARM:

Use the red button on the back of the timer to choose the volume settings (high, low, no sound)

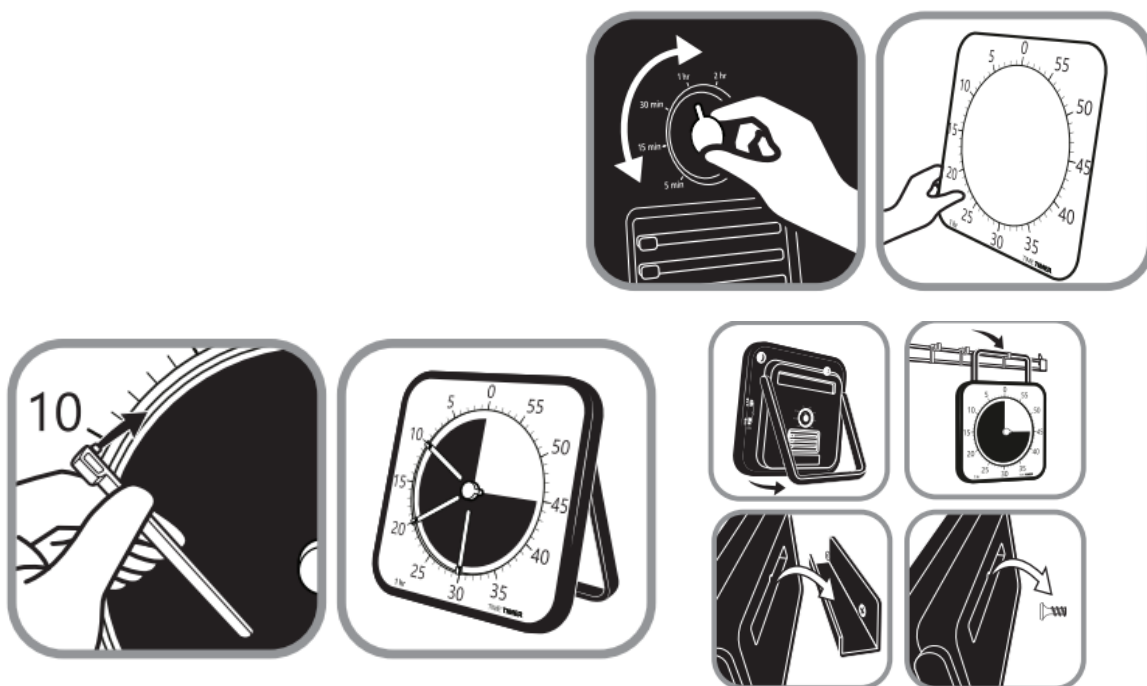


CHANGE THE TIMER PLATE:

Place your finger in the opening on the back of the MAX and push out all three double-sided timer plates. Insert the selected timer plate and press it again

SET ANOTHER TIMER LIMIT:

Turn the time setting at the back of the timer to match the total time duration to the selected timer plate or written on the blank plate.





USING THE SET OF MARKERS:	4 WAYS TO PRESENT:
Create time blocks on each timer plate by snapping the set of 'markers' into the recess of the red disc and numbers. The MAX comes with 3 colours of markers, which can be stored at the back of the timer.	Present the MAX with its stand that can be pulled back or pull it up completely to hang it on a whiteboard, for example. For this, you can use the accompanying suspension system or mount it on the wall

For more information, you can visit our website www.nenko.com

