



1. Productname

Nenko Interactive - Softplay cube

2. Productcode

18871134

3. Short description

A super fun and essential product within the Nenko Interactive program. This wireless, soft cube has six brightly coloured surfaces (Blue, Green, Red, Orange, Yellow and Pink) and by rolling the cube, the colour of the Nenko Interactive products present changes into the colour that is on top. No PC or programs needed. Can be combined with Nenko Interactive products such as light source, bubble units, LED spots and strips, light bulb and depth mirror. Equipped with built-in rechargeable battery and accompanying USB charger.

4. Product specifications

Height: 25 cm

Width: 25 cm

Depth: 25 cm

Weight: 1 kg

5. Content

Package Contents:

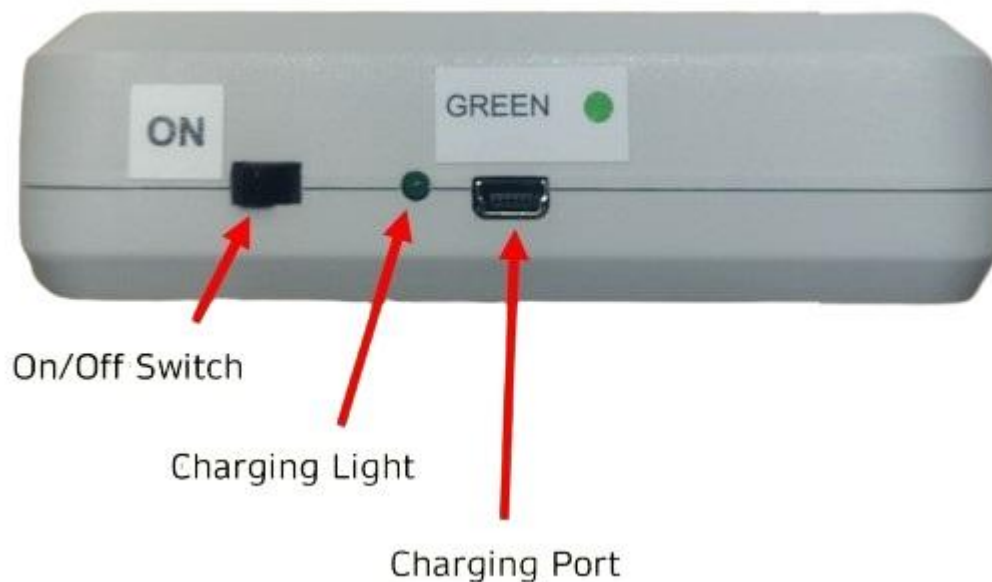
1. Soft Play Cube
2. Wireless Controller Module
3. Charging Cable
4. Power Adapter – With international plug selection



6. Operation

Charging

1. Carefully remove the Wireless Controller Module, charging cable and power adapter from the packaging.
2. Fit the appropriate country plug to the Power Adapter by clipping in the desired pins (see troubleshooting for more details)
3. Connect the charging cable to the adapter and the Wireless Controller Module.
4. Plug the power adapter into the wall and switch on the power. Note that the charging light will light up whilst the unit is charging. When the battery is full, the light will go out. You may have a red, or a green light. Both indicate that charging is taking place when lit.
5. Ensure that the On/Off switch is ON whilst charging. This On/Off switch is primarily for shipping and for storing for long periods/ In times of normal use, this switch can be left on. The softplay cube automatically turns off 20 seconds after being used, and wakes up when it detects motion



Installation

1. Un-zip the side of the Sofy Play Cube.
2. Place the Wireless Controller Module into the cube, making sure to orient it so that the coloured labels on the module match the coloured sides of the cube.
3. Fully insert the Cube Module into the Cube. (Make sure that the Cube Module is ON and charged).



Operation

The Cube can now be turned or thrown to see the colours of your compatible equipment change. The colour of the side facing up is the colour that will activate.

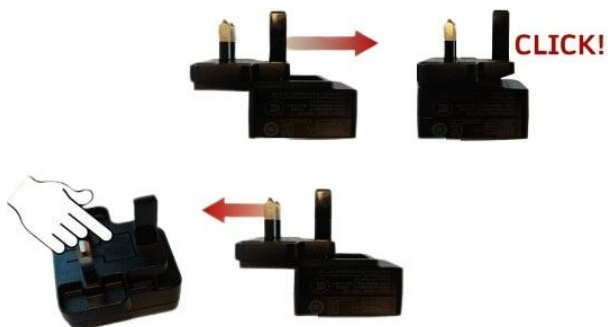
The Cube is for indoor use only, in a dry environment.

7. Troubleshooting

The **Soft Play Cube** is designed to be low maintenance.

If problems occur:

- Check that the Wireless Controller Module is switched ON.
- Check that the Module's charge is not depleted. If so, use the supplied cable to re-charge.
- Check that the Module has been inserted into the Cube in the correct orientation (see installation instructions). If not, this will cause a colour to be activated that does not match the Cube.
- Make sure the Cube has not entered power off mode (even if power switch is ON). This will activate after 20 seconds of not being used. It will re-awaken when it senses movement.
- Make sure the appropriate pins are connected correctly to the charger plug. The pins can be removed by pressing the tab seen below and sliding the pins off.





8. Cleaning

If cleaning the product becomes necessary, use only a soft damp cloth.

Do **NOT** use harsh chemicals or abrasives.



9. Electrical specification

Power adapter:

Input: 100-240V 50/60Hz, 0.2A

Output: 5V 1A (5 Watt)

Wireless Controller:

Input: 5V

Battery Powered (Rechargeable)

Approval: CE-ROHS



For more information, visit our website: www.nenko.com