



1. Name of the product

Nenko Projector

2. Product code

21735111

3. Description

The unique Neo Wall is the only available lava lamp for the wall and is suitable for both adults and children. It is easy to install. The product has been cleverly designed and, after attaching the back plate to the wall, can easily be retracted and secured with two screws. Hex keys are included.

Restful and relaxing. Only for decorative use! Works on 220 volts. Light bulb: 12V 20W GY6.35 halogen capsule. Colors may vary according to availability. Size: 40 cm high



4. Sensory stimulation

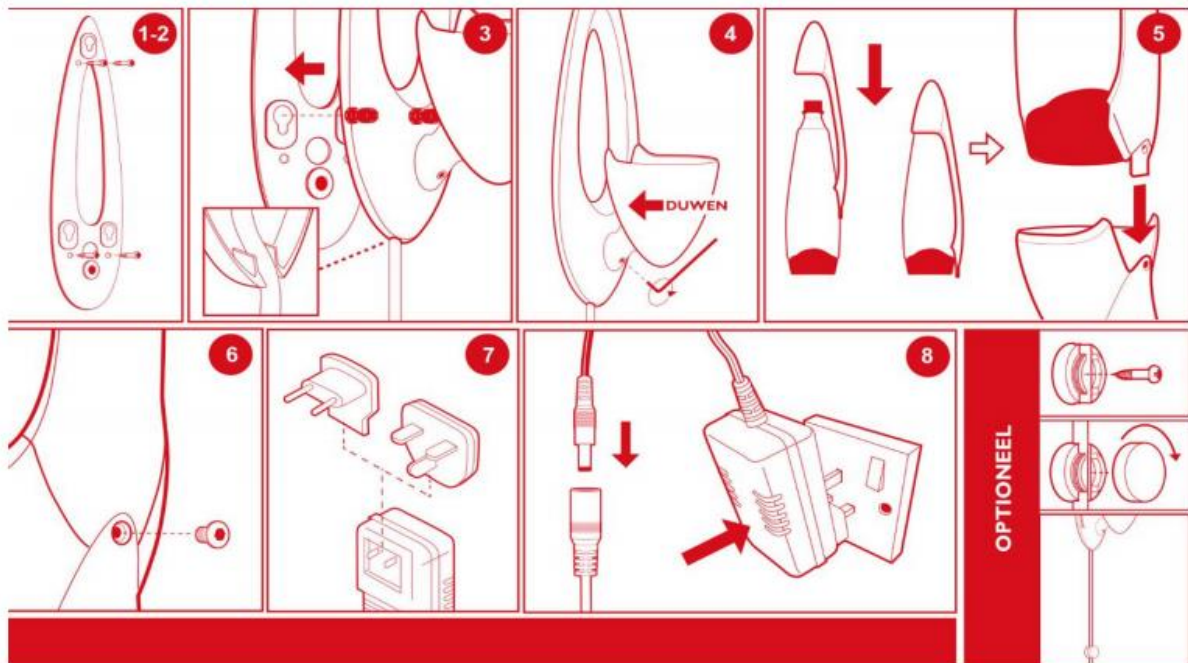
See

5. Contents

1. Base and wall mounting part
2. Bottle
3. Long arm section
4. Wall mounting plate
5. M4 hex key x 1
6. M2.5 hex key x 1
7. Switching power adapter
8. Interchangeable plug for UK
9. Interchangeable plug for EU



6. Installatie



NOTE: Different walls require different types of mounting material. Always use screws and plugs that are suitable for this. If any doubt, please require the help of a professional installer.

1. Place the wall plate on a suitable smooth wall. Ensure that the plate can be placed flat against the wall before you attach it. Ensure that the plate is mounted vertically.
2. Secure it at this location with 4 suitable screws through the holes in the back plate. (screws not included)
3. Make sure the cable passes through the wall housing correctly as shown. Slide the base and wall enclosure component onto the wall mounting plate by hooking the carriers into the three holes.
4. Check that this part is correctly hooked into the wall mounting plate and then attach it to the plate by pressing in and screwing the screw into the handle of the product with the larger M4 Allen key supplied. Ensure that the screw is tight enough so that the part cannot be lifted out of the wall plate.
5. Once it is secure, place the long arm piece on top of the bottle and press it firmly into place. Carefully place the bottle with the arm piece in the lower bowl and bring it into the correct position with the screw hole in the back of the lower bowl.
6. Insert the supplied screw and tighten it with the smaller M2.5 Allen key supplied.
7. Slide the correct plug set (EU or UK) onto the power adapter until it clicks.
8. Insert the plug of the supplied power adapter into the DC opening. Plug in the power cord and turn on the lamp.

7. Safety and instruction

- Choose a location on a clean and smooth wall that is suitable for installation.
- Do not place this item near heat or cold sources, such as heaters or air conditioners. The product works at its best in a space between 68 ° F / 20 ° C and 75 ° F / 24 ° C.
- Keep the cable away from heated surfaces.
- For best performance, we recommend that you keep the product away from sunlight to prevent





discolouration and away from cold places to prevent slow operation and freezing and also away from hot locations to prevent overheating.

- For indoor use only.

8. Additional information

Warming up

Warming up takes approximately 1- 3 hours, depending on the ambient temperature. Stalagmite forms may occur during the heating process. These will then melt and the lava will start to flow. It is normal for small air bubbles and marks to be seen in the glass.

OPERATION

The lava lamp will function best after it has been used four or five times. Small air bubbles can be seen in the lava the first few times. Note: the heating time will become shorter and shorter after a few times.

Please don't use the product for more than six hours a day or overheat; this will extend the life of your product. Overheating will shorten the life of the product. If the product overheats, a large bubble will form at the top of the bottle or a lot of small bubbles.

Never move or shake the product when it is in use or still hot, as this could cause irreversible turbidity.

REPLACEMENTS

When your product has reached the end of its lifetime, clouds will start to appear, colours may fade and the lava will no longer move as well as it did in the beginning. This happens after approximately 2000 burning hours. Please note: we do not refill bottles. Never open the secured cap to add liquids.

If the bulb no longer works, replace it with a bulb of the same type and wattage. Use only the correct light bulb, as stated on the label on the base.

IMPORTANT! Always allow your product to cool completely before handling or moving it. Once your product has cooled completely, you can loosen and remove the screw on the back using the supplied Allen key (keep these parts safe). Hold the bottle and arm section and lift the bottle.

POWER SUPPLY

The product is supplied with an exchange adapter (input 100 240v ~ 50/60 Hz, output 12 V 2.5A). The external flexible cable of this product cannot be replaced. If the cable becomes damaged, this product must be discarded.

9. Safety

- This product is covered by the legal warranty in the country of purchase and meets all applicable standard requirements.
- Use this product only for its intended use as described in this manual. Do not use parts that are not recommended by the manufacturer.
- Do not leave this product unattended if it is not yet installed.





- Do not use any other means to heat the bottle than the supplied light bulb and do not attempt to cool the bottle artificially.
- Do not leave the product on for more than 6 hours a day.
- The liquids in the product are not hazardous and can be disposed of in the normal way. If the liquid is accidentally swallowed, drink plenty of water. If symptoms occur after that, please consult a doctor.
- Never use this product if the bottle has been dropped, as this may cause weak spots. In this case, provide a new bottle and discard the old one. If the contents are spilled, remove as much liquid and lava as possible and then apply the recommended cleaning method for your floor to remove the stained water and wax.

To reduce the risk of burns, electric shock, or personal injury:

- Unplug the power cord from the wall outlet before installing or removing components, or before cleaning the lamp.
- Never use this product if the cord or plug is damaged, if it does not function properly, if it has been dropped or damaged or if it has been immersed in water.
- The external flexible cable of this product cannot be replaced. If the cable is damaged, the product must be discarded.
- To switch off the product, turn the switch to the off position and then remove the plug from the wall socket.
- To prevent burns, never touch the bulb when the product is on or when the mains is switched off. To replace a defective light bulb, unplug the power cord and allow the product to cool sufficiently

The manufacturer of the product is not liable for damage or injury caused by improper use or installation or handling of the product.

For more information, you can visit our website www.nenko.com

