



## 1. Product Name

Kidywolf Kidycam

## 2. Product Code

54856420

## 3. Short Description

The KIDYCAM is specially designed for children and perfect for capturing adventures both on land and underwater. With its waterproof casing and shockproof silicone cover, this camera is built to withstand rough play. Its user-friendly design and optimal grip make it easy for kids to take photos and videos, even underwater.

## 4. Sensory Stimulation

See

## 5. Specifications

Battery:	Built-in 3.7V 600mAh battery
Material:	ABS and rubber
Voltage:	DC 5V
Accessories:	USB-C cable
Weight:	122g
Dimensions:	107 x 71 x 31 mm

## 6. Contents

- 1x Camera
- 1x 32 GB Micro-SD memory card
- 1x User manual
- 1x USB-C cable

## 7. Power Supply

Always use the supplied cable to power the KIDYCAM (AC/DC adapter not included).

The transformer, power supply, or battery charger used with the electric toy must be regularly inspected for damage to the power cord, plug, casing, or other components. In case of damage, the transformer should not be used until it has been repaired.

Incorrect use of the transformer can lead to electric shocks.

The toy should only be operated with a transformer for toys or a power supply for toys. The transformer or power supply is not a toy.

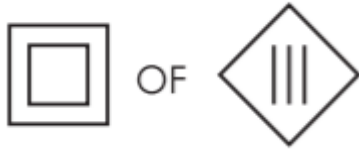
**WARNING!** Only use the detachable power supply unit provided with this toy to charge the battery.

This toy contains a non-replaceable battery.

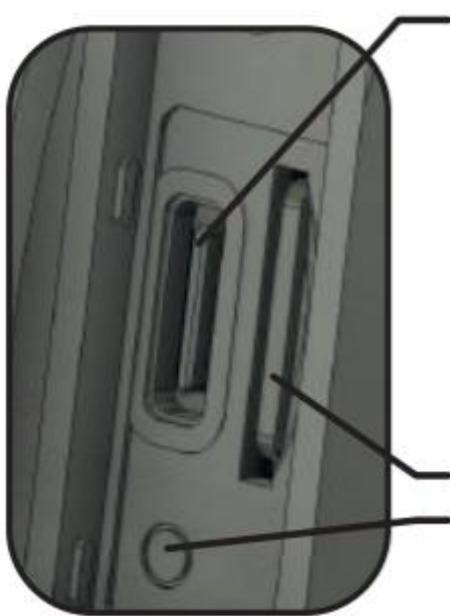
The manual must be kept as it contains important information.

This toy may only be connected to devices that bear one of the following symbols:





## 8. Charging the Camera



Charging port/USB-C connector

**DO NOT CHARGE THE BATTERY IF THE USB-C PORT IS WET. MAKE SURE THE DEVICE IS DRY BEFORE OPENING THE COVER.**

If your KIDYCAM is wet, you must unplug all cables.

Attention:

- Do not dry your KIDYCAM with an external heat source or compressed air.
- Never insert a foreign object into the USB-C port.

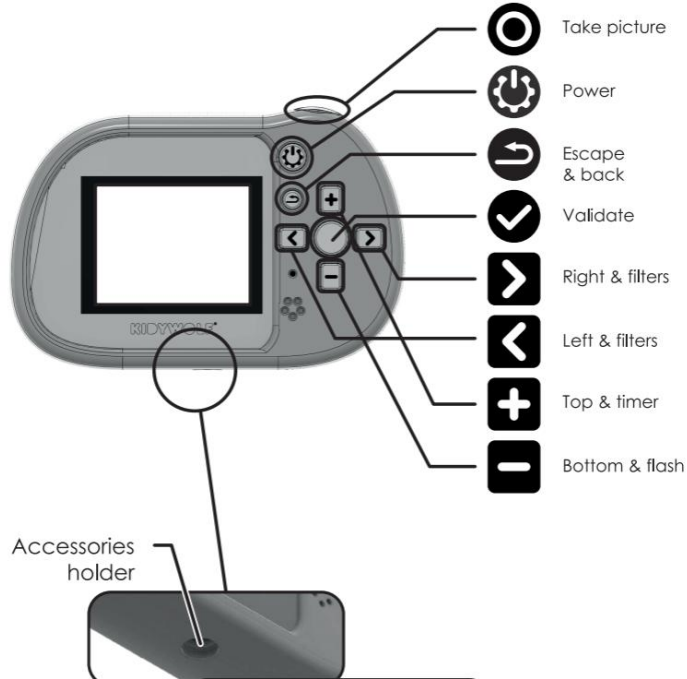
Memory card slot (Micro-SD)

Reset button

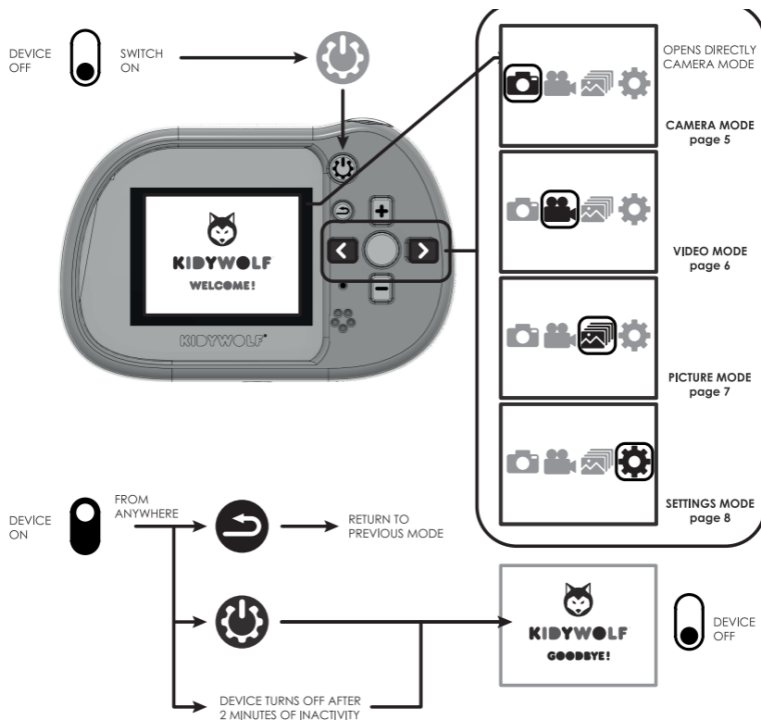


## 9. The Camera

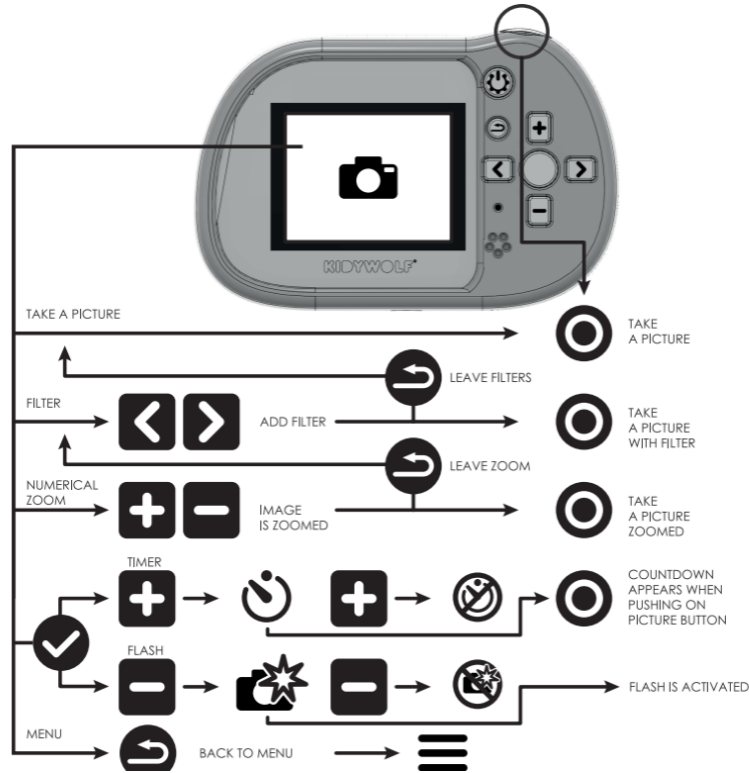
### 1. Rear interface



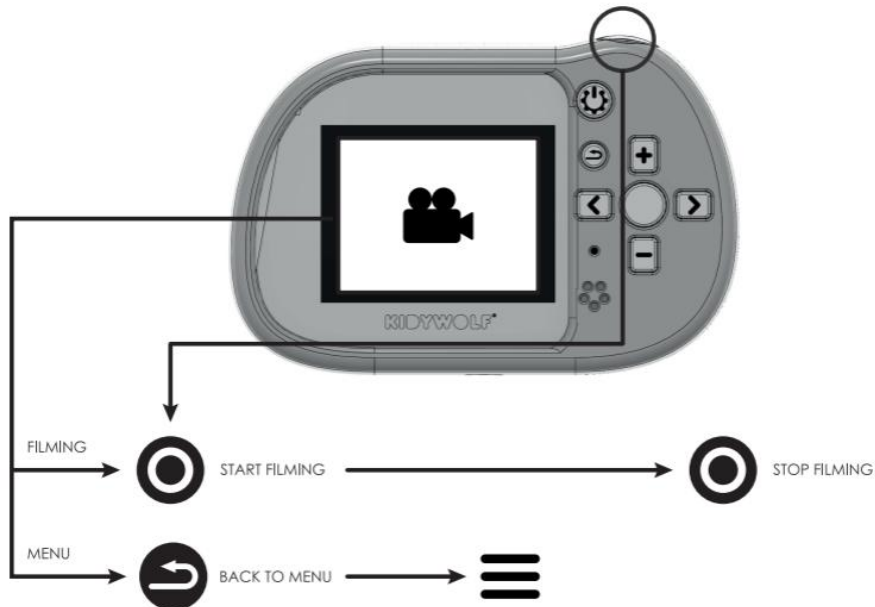
### 2. Menu



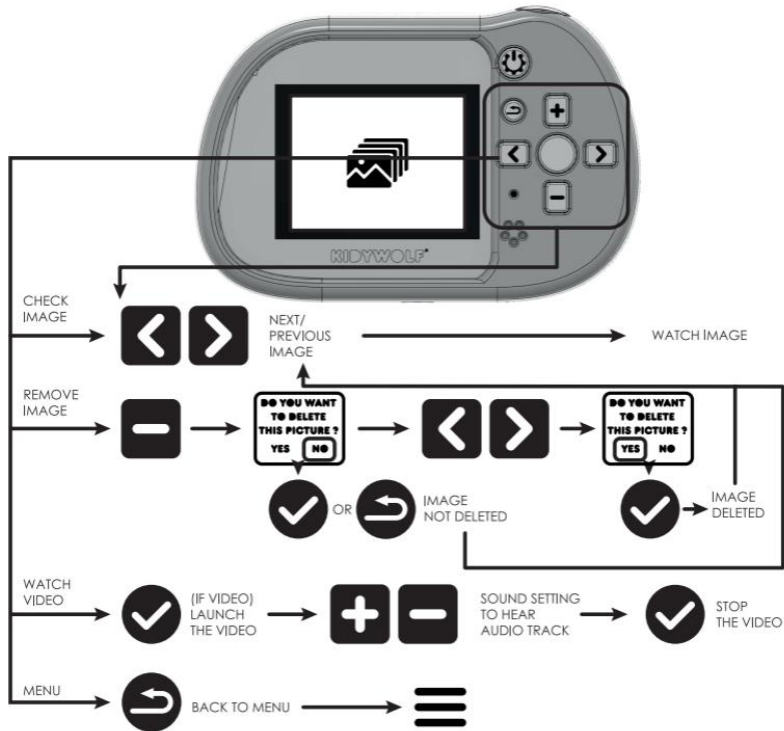
### 3. Camera mode



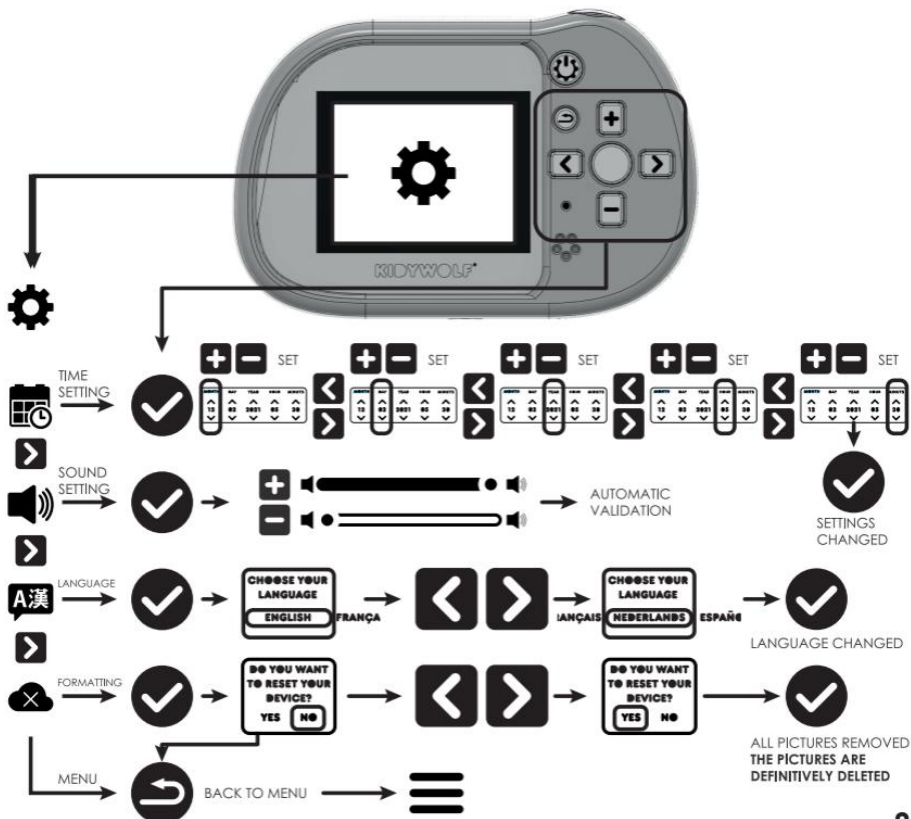
### 4. Video mode



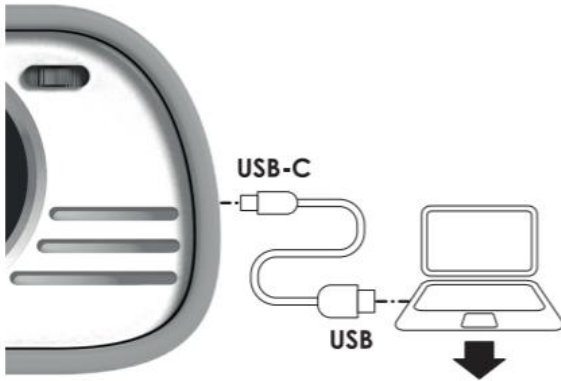
## 5. Gallery mode



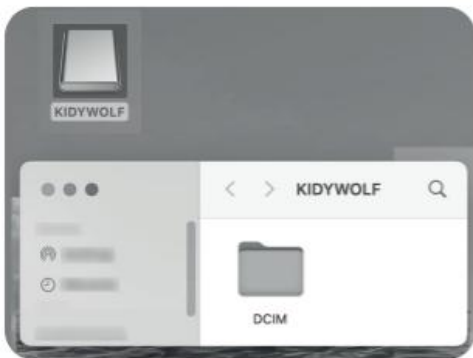
## 6. Settings



## 10.Loading Photos

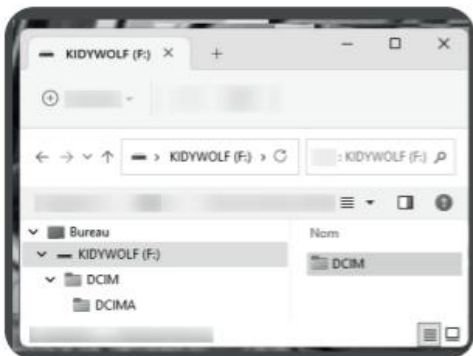


Turn on the KIDYCAM and connect the cable (USE THE ORIGINAL KIDYWOLF CABLE). Then check your computer.



Apple

A "KIDYWOLF" icon will appear on your desktop. Open it, and a DCIM folder will be displayed. Your photos are located in this folder, and you can drag or copy them to a new folder.



PC

Open a new window (Windows E). Open the "Desktop" folder, and a DCIM folder will appear. Your photos are located in this folder, and you can drag or copy them to a new folder.

Keep these instructions as they contain important information.

For more information, please visit our website [www.nenko.com](http://www.nenko.com)

