

1. Name of the product

Fixation set for hanging chair (1 suspension point)

2. Product code

83200065

3. Colour

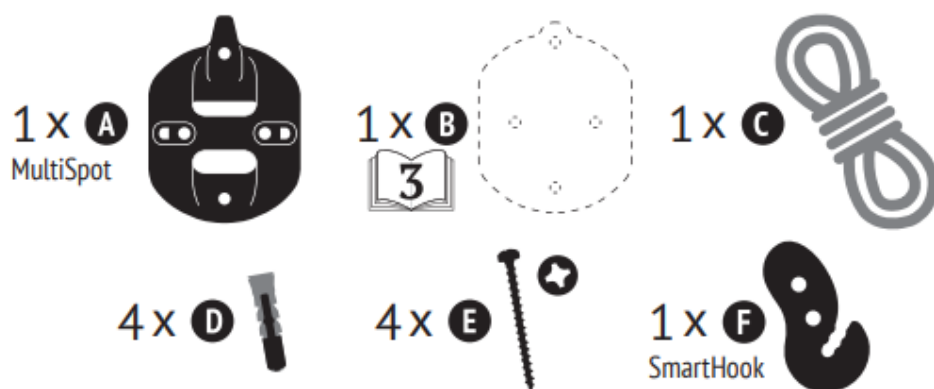
See image



4. Brief description

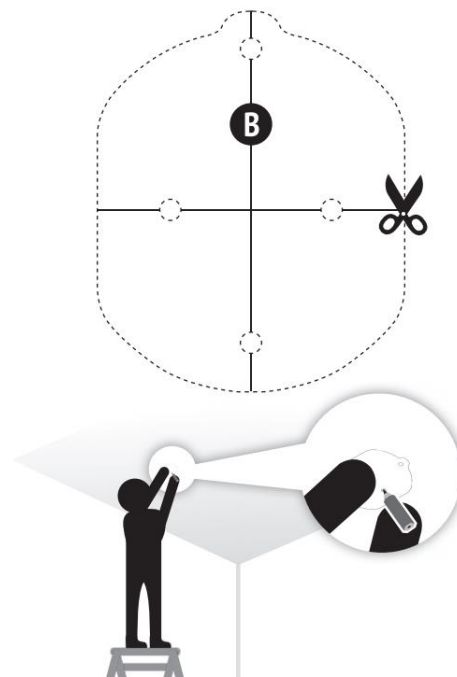
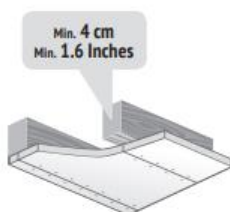
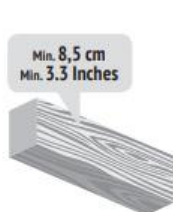
For mounting a hammock chair with one-point suspension on ceiling. With rope, carabiner, eye and plug. This suspension point is suitable for both a wooden and concrete ceiling.
Maximum load 160 kg.

5. Content

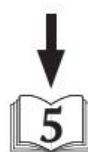
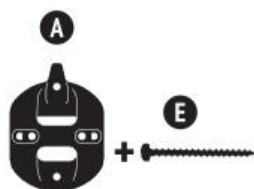
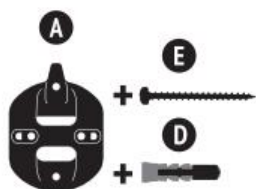


6. Installation

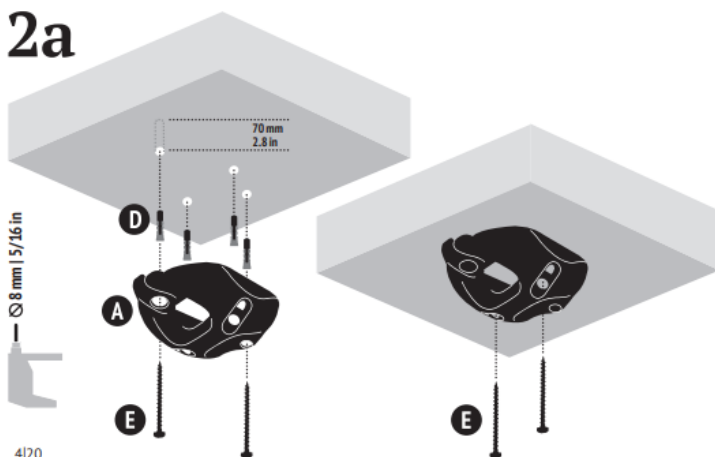
1



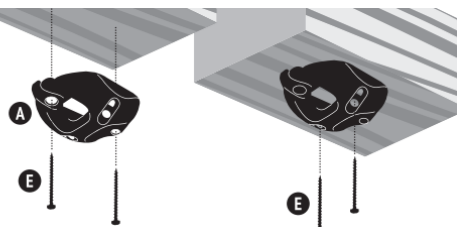
2



2a

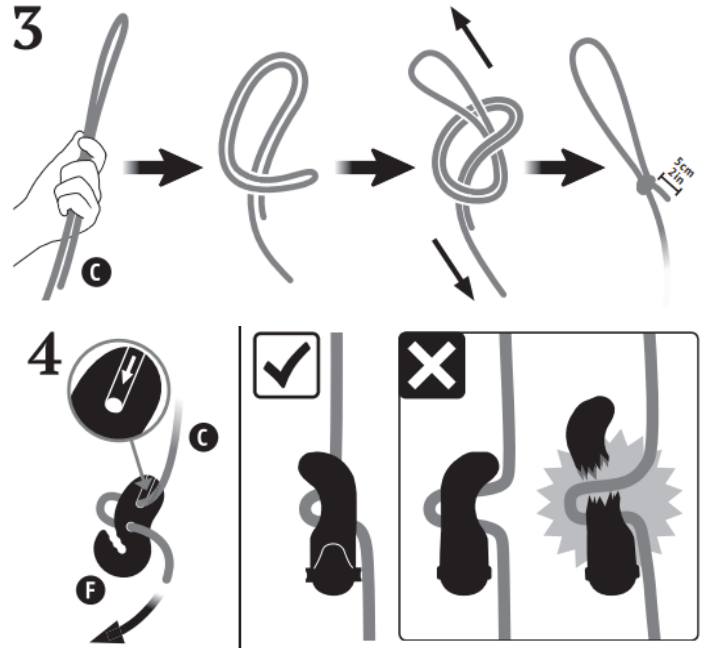
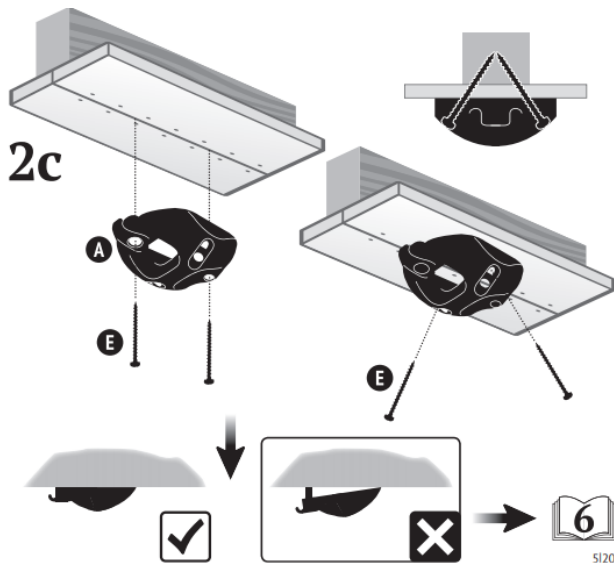


2b





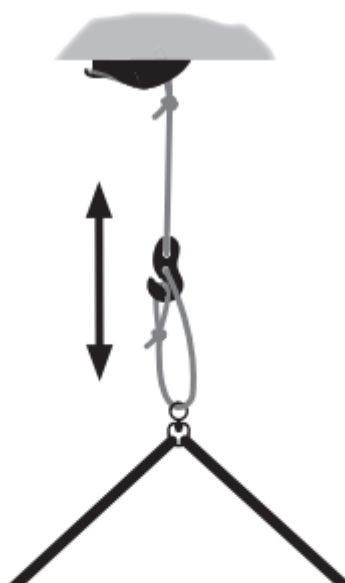
nenko



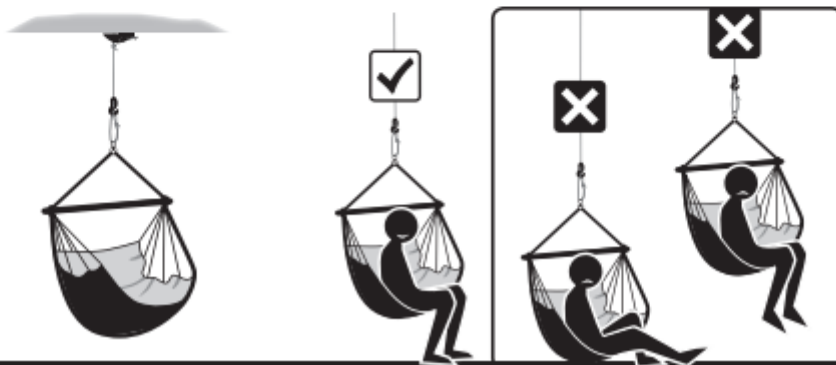
8



9



10



7/20



7. Security

Prevent any abuse! Long rope, danger of injury from strangulation. Easy to swallow small parts, the packaging contains small parts for the installation of the product. Confirmation does not twist. The products may not be hung directly in the MultiSpot.

Risk of injury due to material breakage. Only one rope may be attached to each MultiSpot. Prevent the fastener from making contact with sharp edges. The MultiSpot may only be attached to load-bearing surfaces such as concrete or strong wood beams and is not suitable for attaching to trees. Depending on the nature of the load-bearing material, the requirements for screws and dowels are very different. The screws and plugs supplied with the scope of delivery are high-quality universal solutions that are not suitable for all applications. Therefore, use the supplied screws and plugs only if you can expertly assess their suitability for the material on site. If you have any doubts about the nature of your surface, contact a professional and get advice on the suitable screws and dowels.

The indicated maximum load capacity relates exclusively to the supplied components and can be significantly reduced by an unsuitable nature of the load-bearing material, use of unsuitable screws and plugs or improper installation. The use on thinner wood structures is only allowed after a professional has checked whether the installation can take place. The boreholes must be cleared of boron dust. The supplied plugs should not be used when installing in wood. Remove the rope(s) when not in use. This attachment is not a game or sports device. Use the hanging system exclusively for hammocks or hammock chairs with only one suspension. Use by children only under the continuous supervision of adults.

Do not exceed the maximum load-bearing capacity of the product (see the last page), as this leads to damage. No longer use a damaged product and dispose of it properly. When choosing the location, keep walkways free, choose or create a soft surface and keep your distance from potential obstacles next to and under the product to avoid collisions and injuries.

Fully assemble the fastener before use. Use the confirmation only when you have read and understood this instructions for use. The assembly of the wall or ceiling fastening and the hanging of the product must be carried out by adults in accordance with this instructions for use. Use the product only as described in these instructions for use.

Before each use check all visible components for stability and wear, non-intact parts absolutely must be replaced. Weather conditions and intensive use accelerate wear and tear. Do not use near heat sources or flames. Keep pets away from the product. Clean the fastener exclusively with a slightly damp cloth without detergent. Do not make any changes to the product, this will void the warranty. Dispose of the packaging according to the regulations and environmentally friendly. If the product gets another owner, provide this instructions for use as well.

For more information, you can visit our website www.nenko.com
